

# Utilization of Vehicle Data (Infrastructure Management) Toward Zero Traffic Accident Fatalities

## Road Hazard Monitoring System

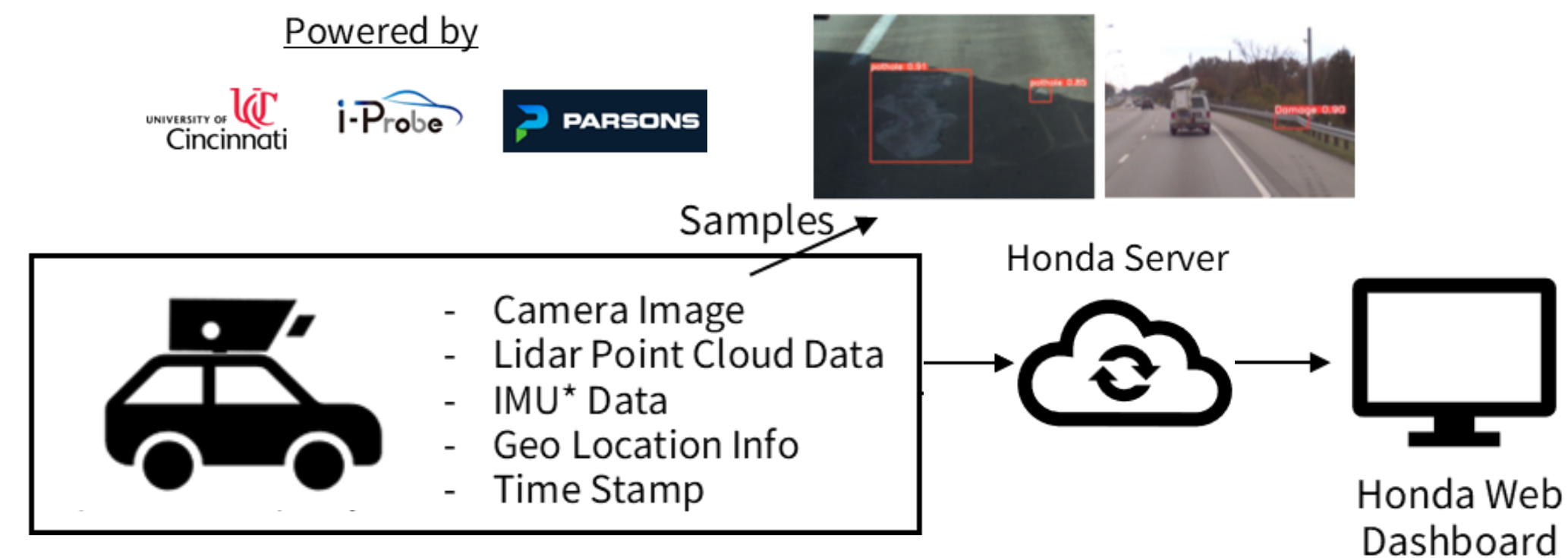
Since 2023, Honda and Ohio DOT have been jointly testing a real-time vehicle-data based road maintenance system to enhance operational efficiency, responsiveness, and safety.



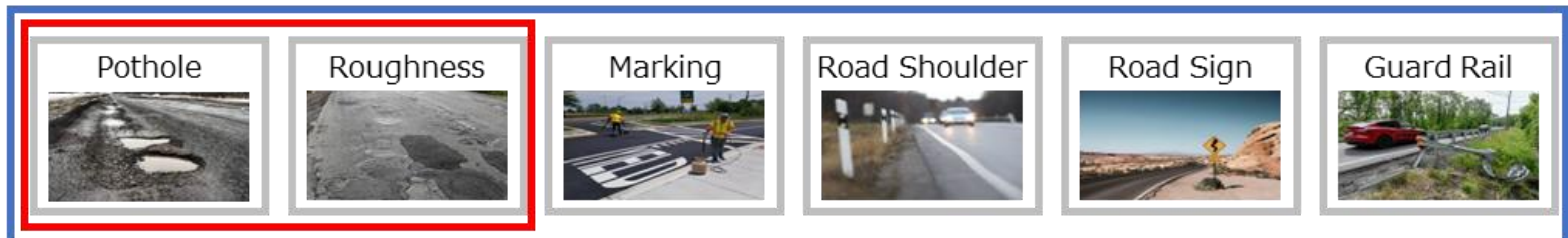
Department of  
Transportation

DriveOhio

### Ohio DOT Project Outline



### Road Deficiency Types

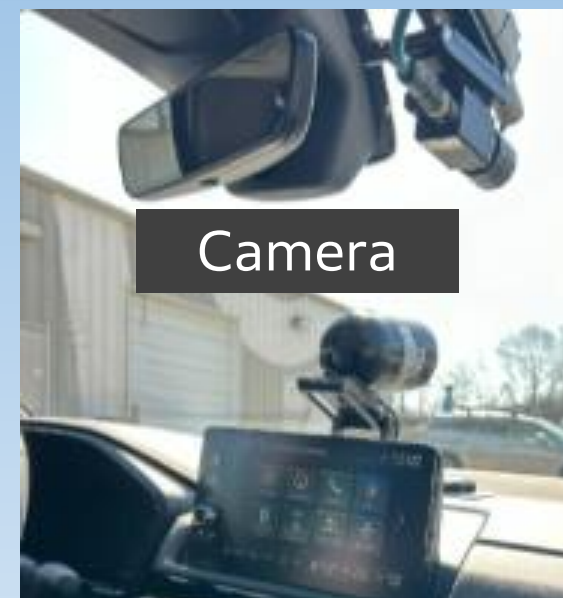


\*IMU: Inertial Measurement Unit – a device that detects 3-axis angle and acceleration

### Technology Details

#### Sensor Parts

Two cameras and LiDAR monitor the conditions of roads including road roughness, potholes, lane markings, guardrails, and road signs.



Camera

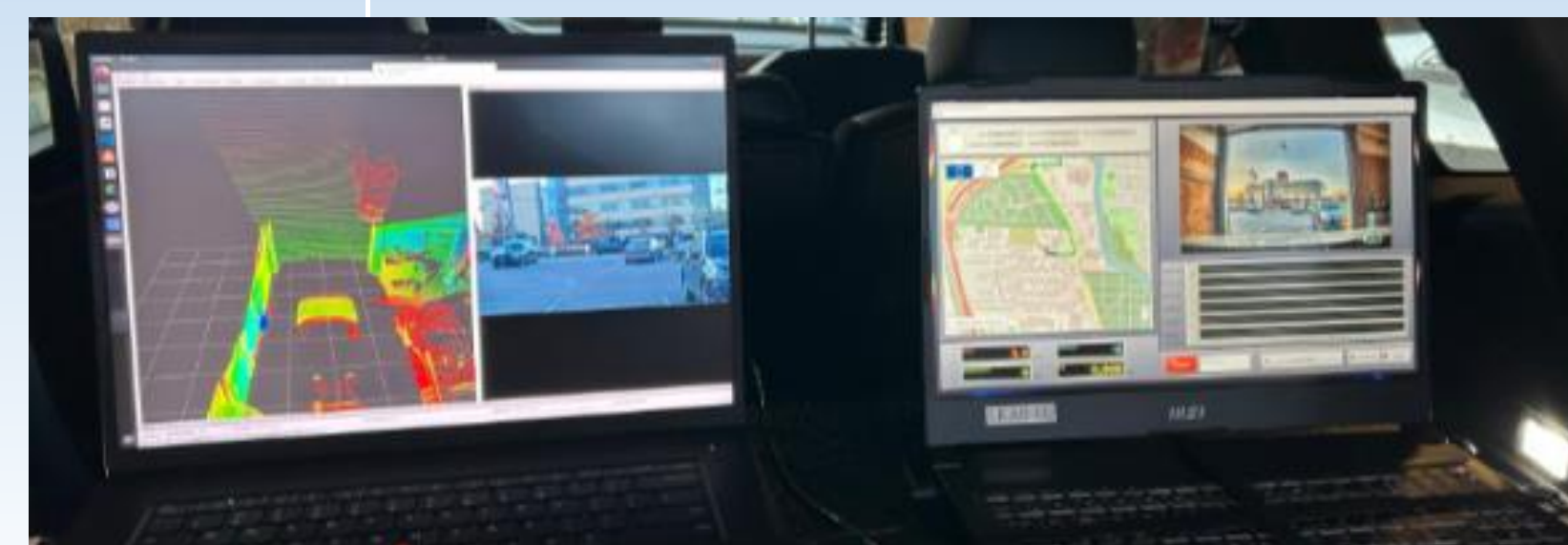


LiDAR

GPS

#### Setting PCs

All settings can be configured via two PCs installed in the trunk compartment.



#### Display Monitors

Inspection details can be checked in real time via multiple monitors in the cabin.



HONDA