

# Safe Fundamental Technology that Realizes Value Unique to Honda

## Next-Generation Honda SENSING

**Aim at making it to the end without any interruptions safely and securely with strong cognitive ability even in difficult scenarios, regardless of the weather or time of day**

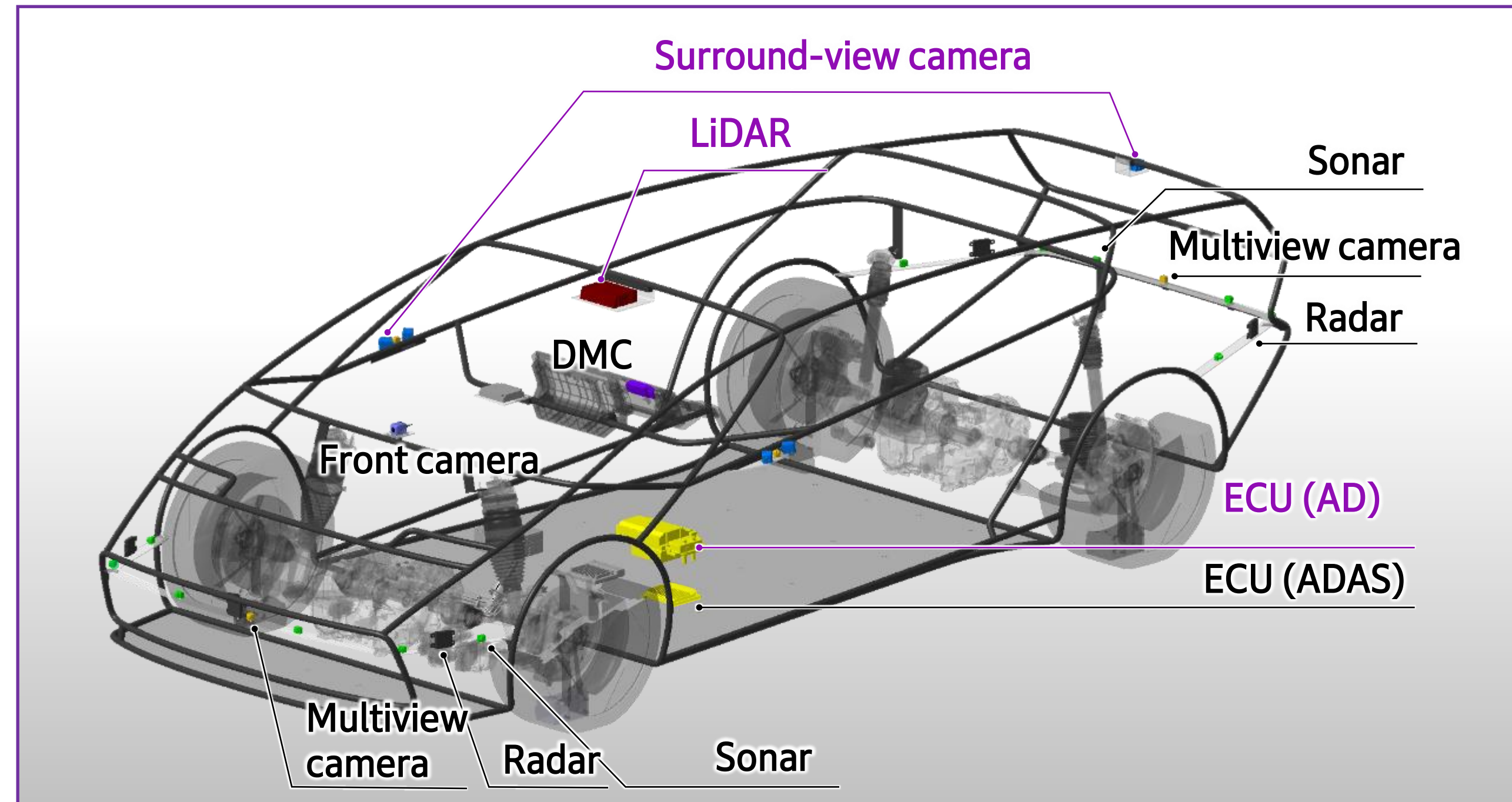
### Technology Details

#### Highly Accurate Detection Sensor

**Recognizes risk by detecting a wider range with higher accuracy than humans through a combination of different sensors**

##### Characteristics

Strong against changes in the weather ——— **Combination of LiDAR, radar, and cameras**  
Highly accurate, highly reliable long-distance detection ——— **LiDAR**  
Strong at night ——— **Surround-view camera (high dynamic range)**  
Unique AI drive and sensor fusion ——— **High-performance ECU**



#### Unique AI

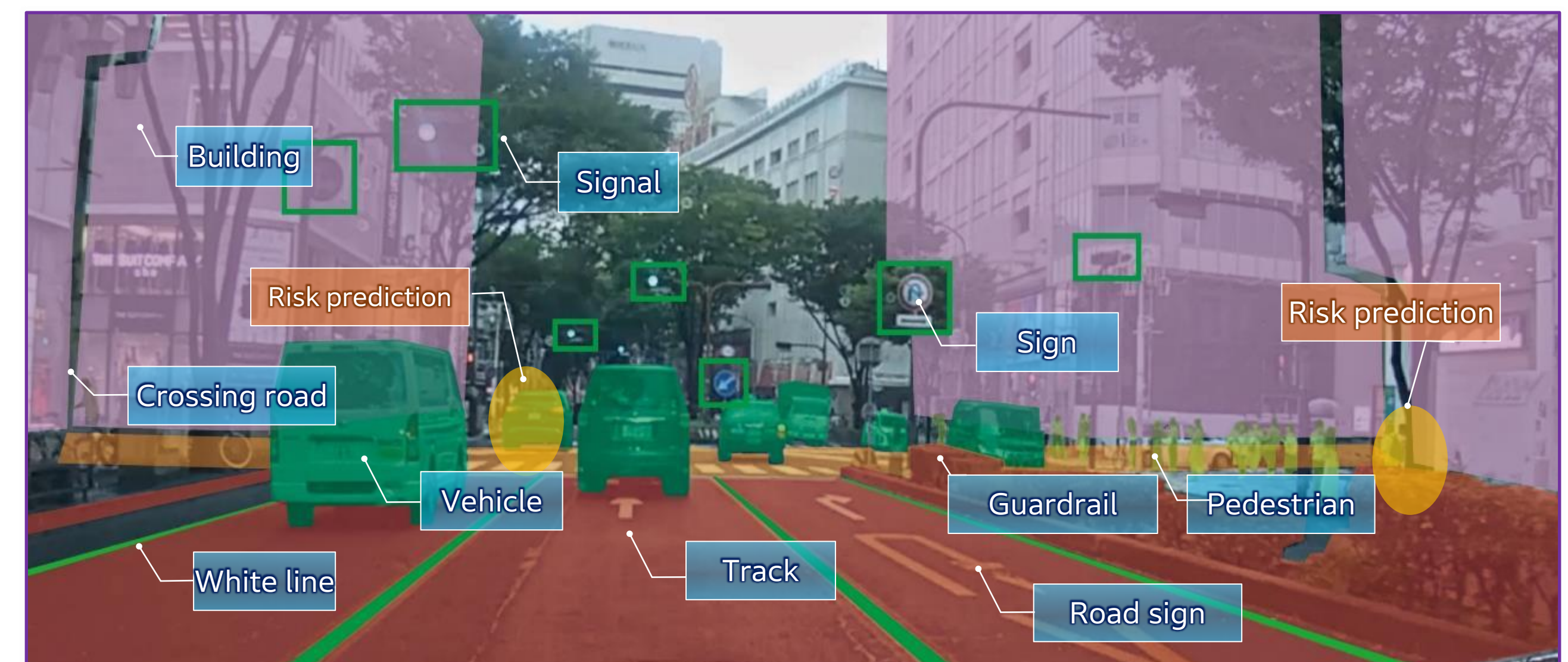
**Concept learning at a heightened level of abstraction**  
**Unsupervised learning**

- Expands the provided area in a shorter period of time than ever before
- Recognizes structures with almost all of the patterns in real time Enables eyes-off driving even in environmental changes and on roads being driven on for the first time

+

Driver behavior model of experienced drivers

**Predicts the behavior of objects like an experienced driver, enabling smooth avoidance.**



**Risk is recognized through highly accurate detection sensors, aiming for smooth avoidance through Honda's unique AI technology.**