

Serve people worldwide with the “joy of expanding their life’s potential”

- Lead the advancement of mobility and enable people everywhere in the world to improve their daily lives -

Environmental technology

Carbon-free society

Toward a sustainable eco-society

Collision-free technology

A society with zero traffic accidents

Giving a sense of security
to all traffic participants

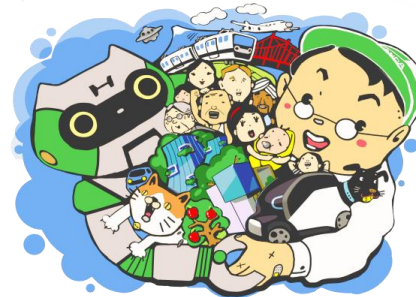
Honda eMaaS·Connected

A society that expands life’s potential

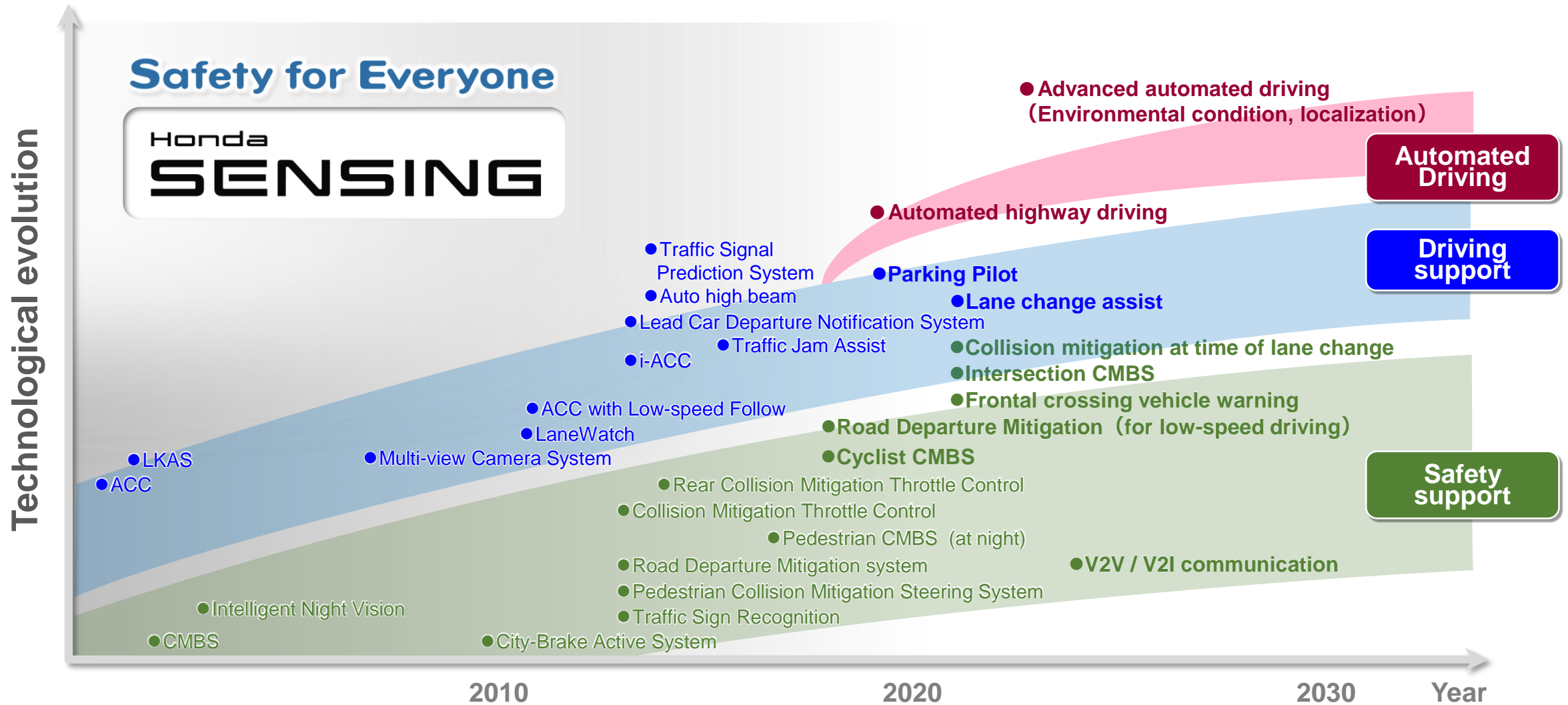
Enjoyable, convenient,
and comfortable for everyone

Existing
value

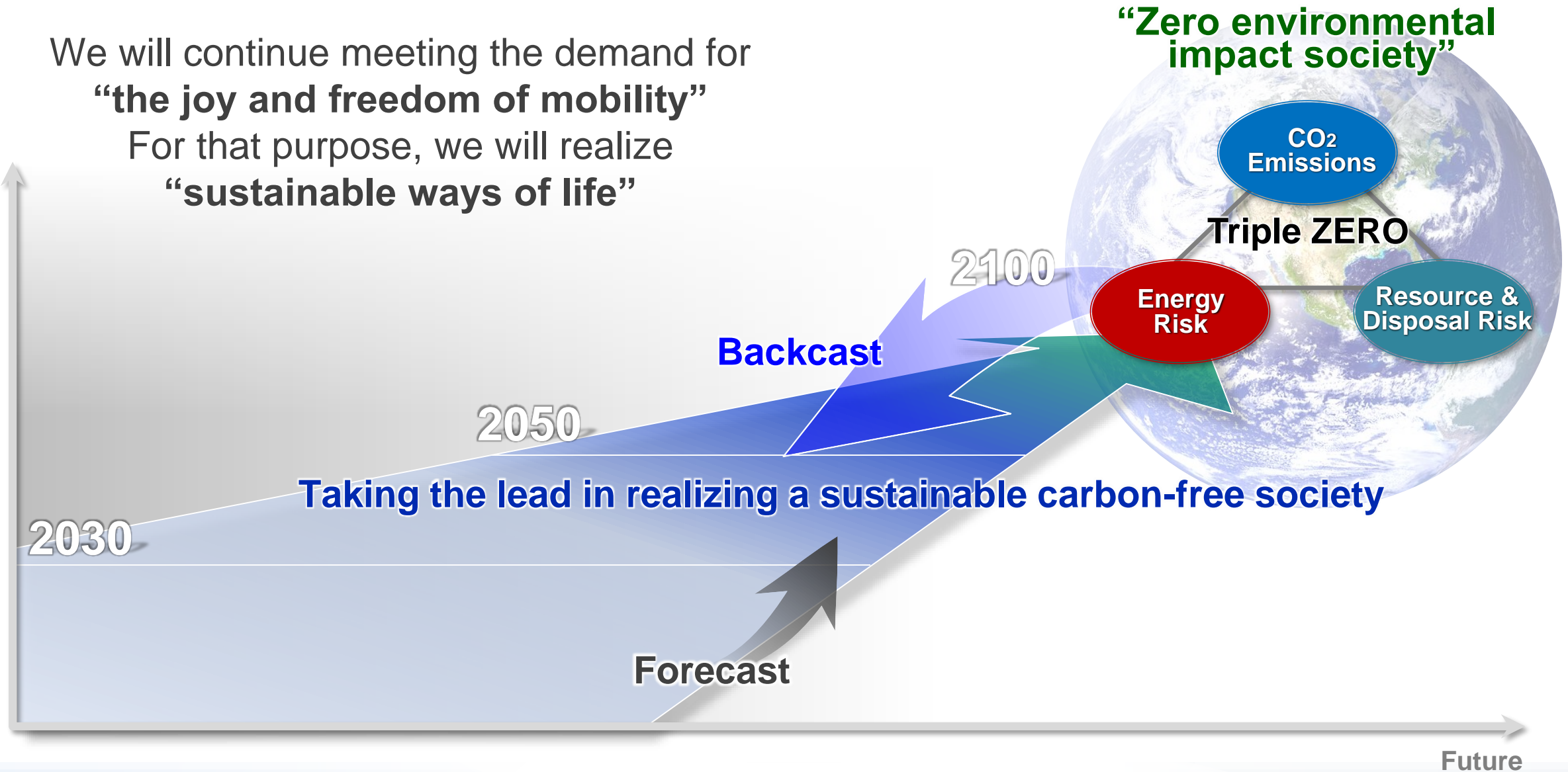
Human-centered
product manufacturing for the users’ benefit

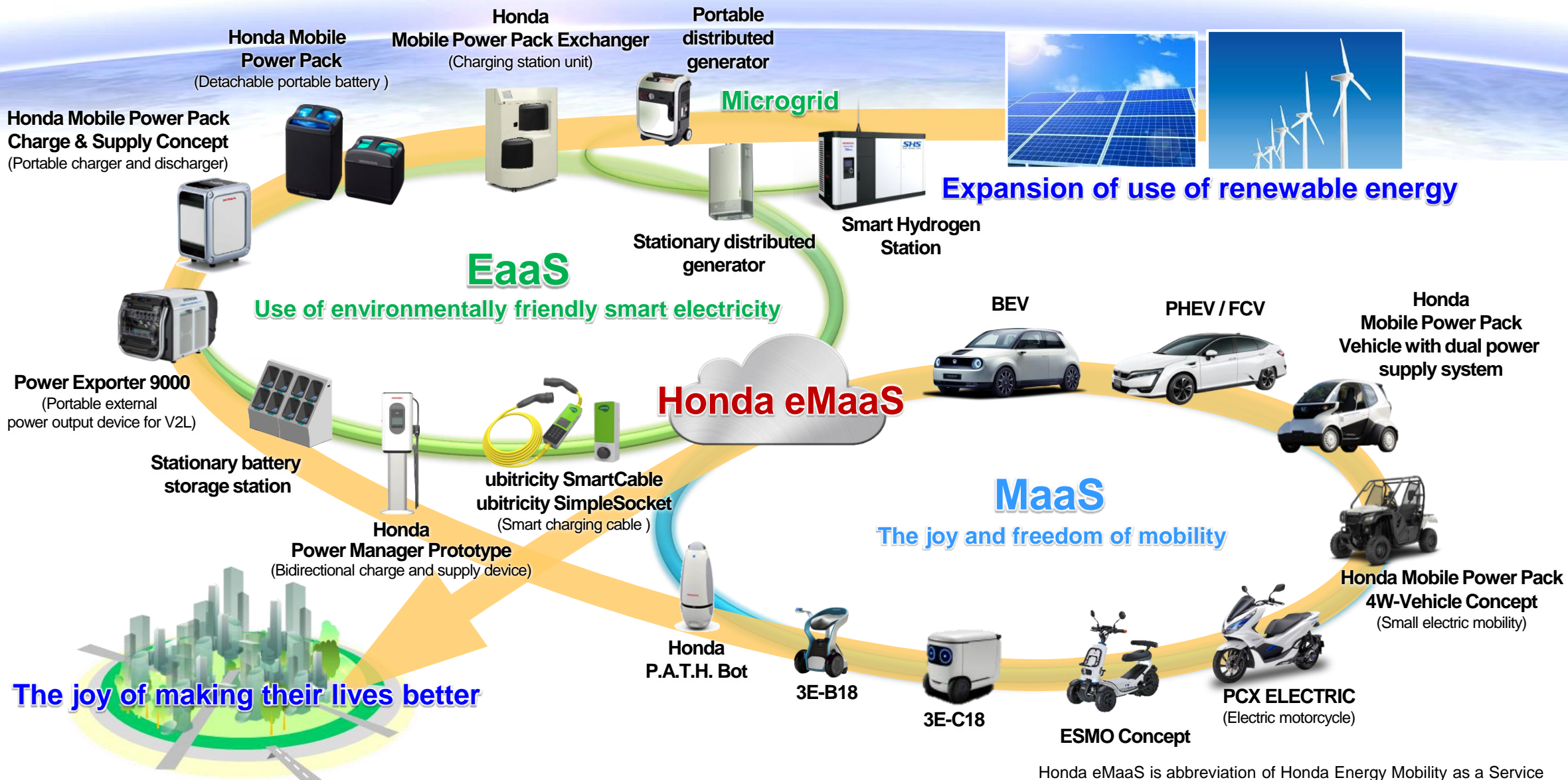


Collision-free Society and Joy & Freedom of Mobility



We will continue meeting the demand for
“the joy and freedom of mobility”
For that purpose, we will realize
“sustainable ways of life”





Honda eMaaS is abbreviation of Honda Energy Mobility as a Service

Providing the joy of making their lives better via carbon-free society

Honda ITS global efforts to help people live safe and secure



Category	Exhibition items	Expansion area ○ <Exhibited this time ●>		
		Asia	Americas	Europe
Collision-free technology Striving toward a Collision-free Mobile Society	• Automated Driving via Anticipation , Prediction and Cooperative driving by AI	●	○	○
	• L3 Pilot Driving Automation European countries Piloting Automated Driving on European Roads	○	○	●
	• Honda SENSING • Honda SENSING VR	● ●	○	○
	• U.S. Smart Mobility Corridor V2X Pilot Deployment • Safe Swarm VR		● ●	
Environmental technology Striving toward a Zero-Emission Society	• Data collection scheme and Battery service information in Demonstration Program	●		
Honda eMaaS·Connected Striving toward a Society that expands life's potential	• New utilization of V2X technology~Kakogawa City	●		
	• A demonstration experiment of Road Surface Condition Monitoring system using vehicle probe data in America		●	
	• A demonstration experiment of Anti-steal system for motorcycle, using Terrestrial Digital broadcasting in Brazil		●	