

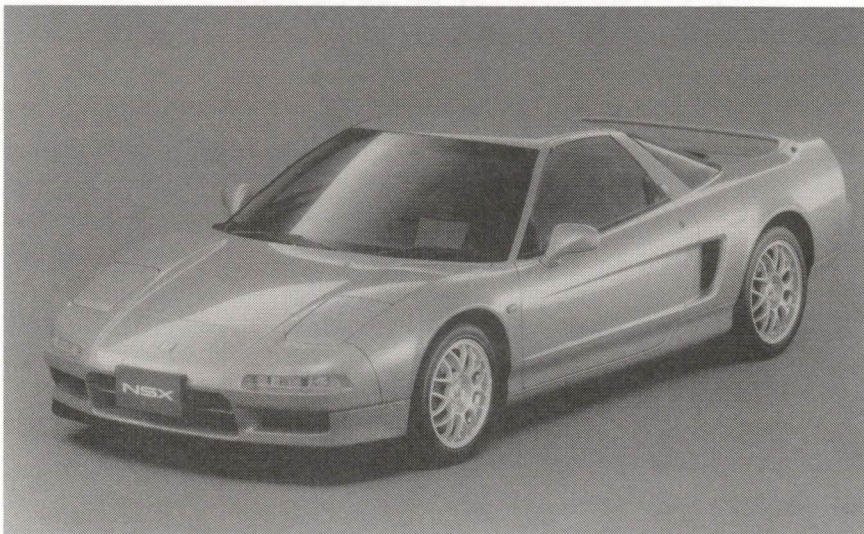
**Honda updates its “NSX” and adds new “Type S”**

Ref. 97005

Tokyo, February 6, 1997 -- As another step in the continuous development of the NSX, Honda introduces today a new 6-speed manual transmission NSX equipped with a larger, 3.2-liter engine. The line-up is further enhanced by the introduction of a new sportier “Type S” version. This new NSX will be available at Honda Verno dealers nationwide starting February 7, 1997.

With the present model change, Honda introduces a new, larger 3.2-liter engine exclusively matched to a new 6-speed manual transmission. In the meantime, models equipped with an automatic transmission see their F-matic transmission upgraded to better use the advantages provided by the electronic Drive By Wire (DBW) control of the throttle, for even smoother gear shifts.

All models are further equipped with larger brakes and improved suspension settings, while the “Custom Order Plan” is being developed into it’s present Stage 6. Finally, a more driver-oriented version of the NSX is added to the line-up in the form of the new, sportier “Type S”.



NSX Type S



### **Changes implemented:**

- New 3.2-liter engine available on all models with manual transmission.
- New close-ratio 6-speed manual transmission.
- Larger disk brake rotors and revised settings for both the suspension and the electric power-steering system.
- F-matic transmission fine-tuned for improved response and smoother downshifts.
- New front under skirt for improved aerodynamics.
- New HID (High Intensity Discharge)-type headlights standard on Type T and Type S models (Custom Order Plan item for the Coupe)
- All-round heat reflective type green glass.
- Optional navigation system (VICS compatible)
- New, Step 6 Custom Order Plan

### **NSX Type S main features:**

The Type S introduced this time boasts a weight reduction of some 45 kgs without having to sacrifice the comfort associated with air-conditioning and other items. The car features specific suspension settings as well as revised steering wheel and shift knob designs. A more specifically circuit-oriented Type S-Zero version is also part of the present line-up.

- Specific suspension settings for increased road information and more neutral steer characteristics.
- 45 kgs weight reduction (vs. Coupe model with power steering).
- Type S-specific BBS forged aluminum wheels (also contributing to a 4 kg unsprung weight reduction).
- Type S-specific Momo steering wheel and Recaro full-bucket seats, titanium shift knob, mesh-grilled maintenance lid and side air intakes.
- Deletion of the air-conditioner and the audio equipment, reduced sound deadening material and other efforts on the Type S-Zero yielding a weight reduction of some 96 kgs compared to the Coupe model equipped with power steering. This type S-Zero also boasts specific suspension tuning, making it the perfect base for tuning purposes.

## "New NSX" Specifications

February 6, 1997

MODEL		NSX Coupe		NSX Type T		NSX Type S
TRANSMISSION		4AT	6MT	4AT	6MT	6MT
DIMENSIONS and WEIGHT						
Length	mm	4430				
Width	mm	1810				
Height	mm	1170				1160
Wheelbase	mm	2530				
Track Front/Rear	mm	1510/1530				
Ground Clearance	mm	135				125
Weight	kg	1,390	1,350	1,430	1,410	1320
Turning Radius	m	5.8				
Passenger Capacity		2				
ENGINE						
Construction		V6 DOHC VTEC				
Bore x Stroke	mm	90.0 x 78.0	93.0 x 78.0	90.0 x 78.0	93.0 x 78.0	93.0 x 78.0
Displacement	cm3	2977	3179	2977	3179	3179
Compression Ratio		10.2				
Maximum Power	PS/rpm	265/6800	280/7300	265/6800	280/7300	280/7300
Maximum Torque	kg.m/rpm	30.0/5400	31.0/5300	30.0/5400	31.0/5300	31.0/5300
Fuel Supply		PGM-FI				
Tank Capacity	liters	70				
FUEL CONSUMPTION (km/l)						
10.15 mode		8.4	9.0	8.4	9.0	9.0
60 km/h		15.4	16.7	15.4	16.7	16.7
CHASSIS						
Steering System		Rack and Pinion				
Suspension		4 Wheel Double Wishbone				
Brakes		4 Wheel Ventilated Disks				
Wheels	Front	16 x 7JJ				
	Rear	17 x 8.5JJ				
Tires	Front	215/45 ZR 16				
	Rear	245/40 ZR 17				

## "New NSX" Suggested Retail Price

x Yen 1,000	NSX Coupe		NSX Type T		NSX Type S
	4AT	6MT	4AT	6MT	6MT
<b>Suggested Retail Price (Tokyo area)</b>	9,307	9,107	10,057	10,257	10,357

Notes: 1) Dual SRS Airbag system is standard on all models except Type S versions.  
 2) Type S-Zero version available at Yen 9,857,000.

### Optional Equipment:

- Dual SRS Airbag System + Cruise Control (Type S)	Yen 100,000
- Electric Power Steering (Standard on NSX AT and Type T)	Yen 400,000
- Pearl Finish Paint	Yen 150,000
- Navigation System	Yen 500,000